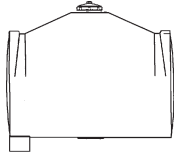


## Millennium Tanks

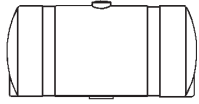


Item#	Size (Gal.)	Ht. w/Lid (In.)	Width (In.)	Length (In.)	Lid (In.)
6466	260	46	32	62	8
6467	310	53	32	62	8
6468	410	64	32	62	8

**Rotonics - Colorado: (303) 227-9300**  
**Rotonics - Texas: (940) 668-8596**  
[www.rottonics.com](http://www.rottonics.com)

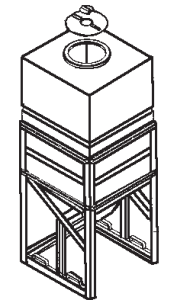
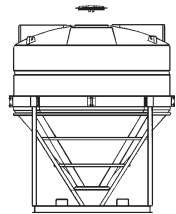
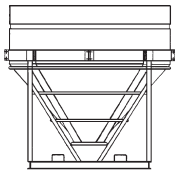
- Available in crosslink polyethylene or FDA-approved high density linear polyethylene
- Impact and corrosion resistant
- Seamless, one piece construction
- Polyethylene offers tremendous chemical resistance.
- Industrial and agricultural tanks designed for transporting and sprayer applications
- RMI polyethylene tanks are very durable yet lightweight, and easy to install and clean.
- Ideal for numerous farming containment needs from farm chemicals to potable water
- Saddle assembly required for Millennium & Horizontal saddle tanks for warranty to apply

## Horizontal Saddle Tanks



Item#	Size (Gal.)	Ht. w/Lid (In.)	Dia. (In.)	Length (In.)	Lid (In.)
6432	110	31	30	44	8
6450	200	35	33	68	8
6452	200	40	39	48	8
6455	300	40	38	67	8
6458	400	42	42	75	8
6459	500	47	47	74	8

## Cone Bottom Tanks



Dome Top		Ht.		Degree	
Item#	Size (Gal.)	Dia. (In.)	w/Lid (In.)	w/Stand (In.)	Lid of Slope (In.)
6475	55	32	33	53	8/16* 60
6485	115	32	51	71	8/16* 60
6490	175	32	69	88	8/16* 60
6495	230	32	86	106	8/16* 60
6496	500	52	83	103	24 60
6497	700	52	110	130	24 60
6500**	1100	90	77	90	16 50
6505**	1600	90	96	109	16 50
6510**	2300	90	123	136	16 50
6515**	3000	90	149	162	16 50

Open Top		Ht.		Degree	
Item#	Size (Gal.)	Dia. (In.)	Ht. (In.)	w/Stand (In.)	Lid of Slope (In.)
6501	920	90	63	76	50
6506	1440	90	79	92	50
6511	2175	90	106	119	50
6516	2900	90	136	149	50

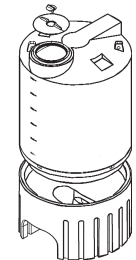
\*Larger Lid Optional

\*\*Molded-in lifting lugs available upon request.

Slope Bottom		Ht.				
Item#	Size (Gal.)	w/Lid (In.)	w/Stand (In.)	Width (In.)	Length (In.)	Lid (In.)
6518	350	74	97	38	40	16
6519	400	83	106	38	40	16

- Available in crosslink polyethylene or FDA-approved high density linear polyethylene
- Heavy duty tanks used for mixing, settling, and storage of dry materials, as well as highly viscous solutions, up to 16.5 lbs./gal.
- Basic stands are equipped with forklift channels.
- Optional mixer mounts and pump platforms are available.
- Installed inlets and outlets are available to fit certain specifications.
- Impact and corrosion resistant
- Seamless, one piece construction

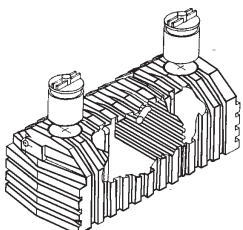
## All Poly Cyclone



Item#	Size (Gal.)	Dia. (In.)	Ht. (In.)	Ht. w/Lid (In.)	Lid (In.)
64981	525	56	45		
6499	Base	56	35	80	16
6498	780	56	69		
6499	Base	56	35	104	16

- Excellent corrosion resistance
- Dish bottom design for complete drainage
- Accepts 2" or smaller tank adapters
- Ball valves and quick release cam locks are available.
- Available in crosslink polyethylene or FDA-approved high density linear polyethylene
- Impact and corrosion resistant
- Seamless, one-piece construction

## Cistern & Septic Tanks



Item#	Size (Gal.)	Ht.		Height		
		w/Lid (In.)	Wdth. (In.)	Lgth. (In.)	Inlet (In.)	Outlet Lid (In.)
<b>Septic:</b>						
36983	1250 (2/3-1/3)*	52	63	132	44	20
36977	500	42	68	97	29	20
<b>Cistern:</b>						
36996	1700	61	51	162	55	20
36986	1400	52	63	132	44	20
36978	500	42	68	97	29	20

\*IAPMO Certified

- FDA-approved high density linear polyethylene
- Manufactured at a heavy weight, which provides longer service life, especially in frequent pump applications.
- Unaffected by chemicals and sewer gas
- Pipe struts from the floor to the ceiling to keep the floor flat.
- Ribbed design will support soil loads of 500 lbs/ft<sup>2</sup>, often seen at 3' burial depth.
- Low profile tank design minimizes excavation depth
- Optional 9" stackable risers assist inspectors for pumping and real estate transactions.
- RMI's septic tanks can treat wastewater better than most sewage treatment plants at a fraction of the cost.
- Large 20" entry/view port with man way risers and a sealed lid with gasket are included.