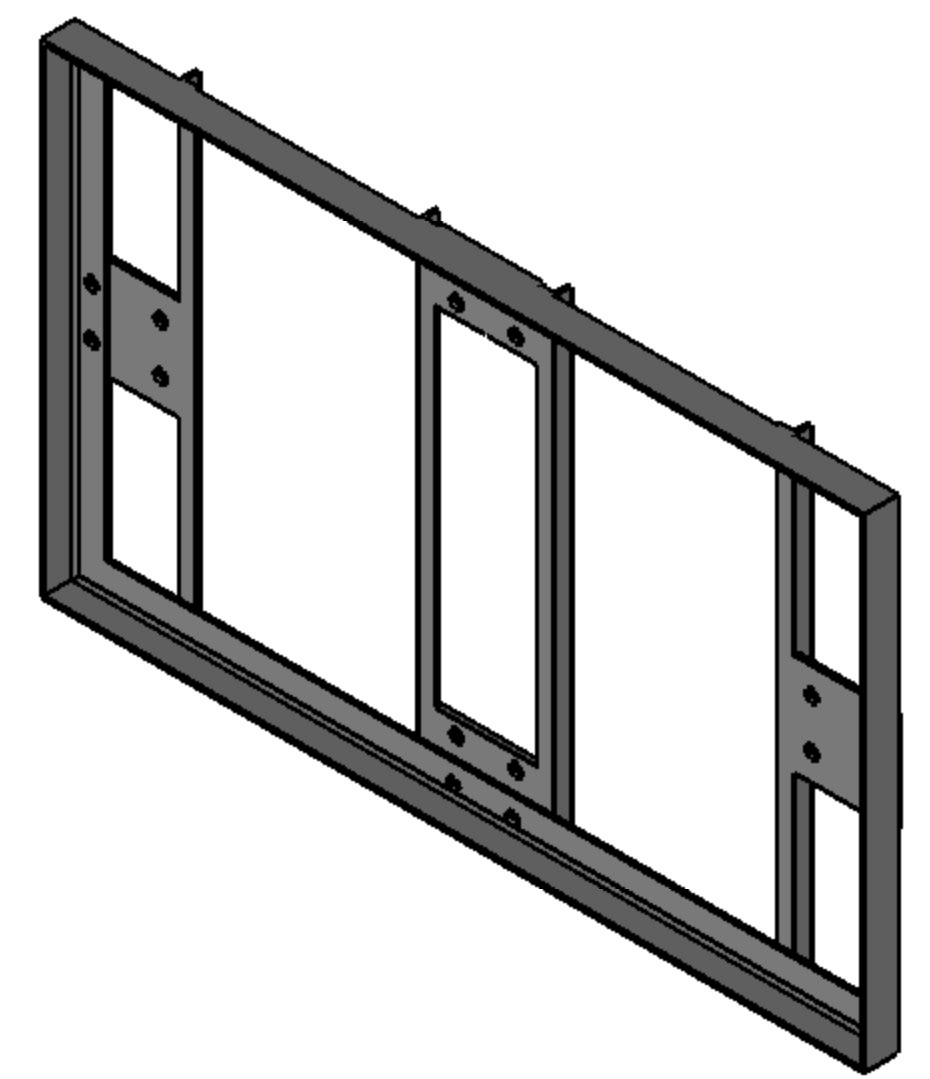
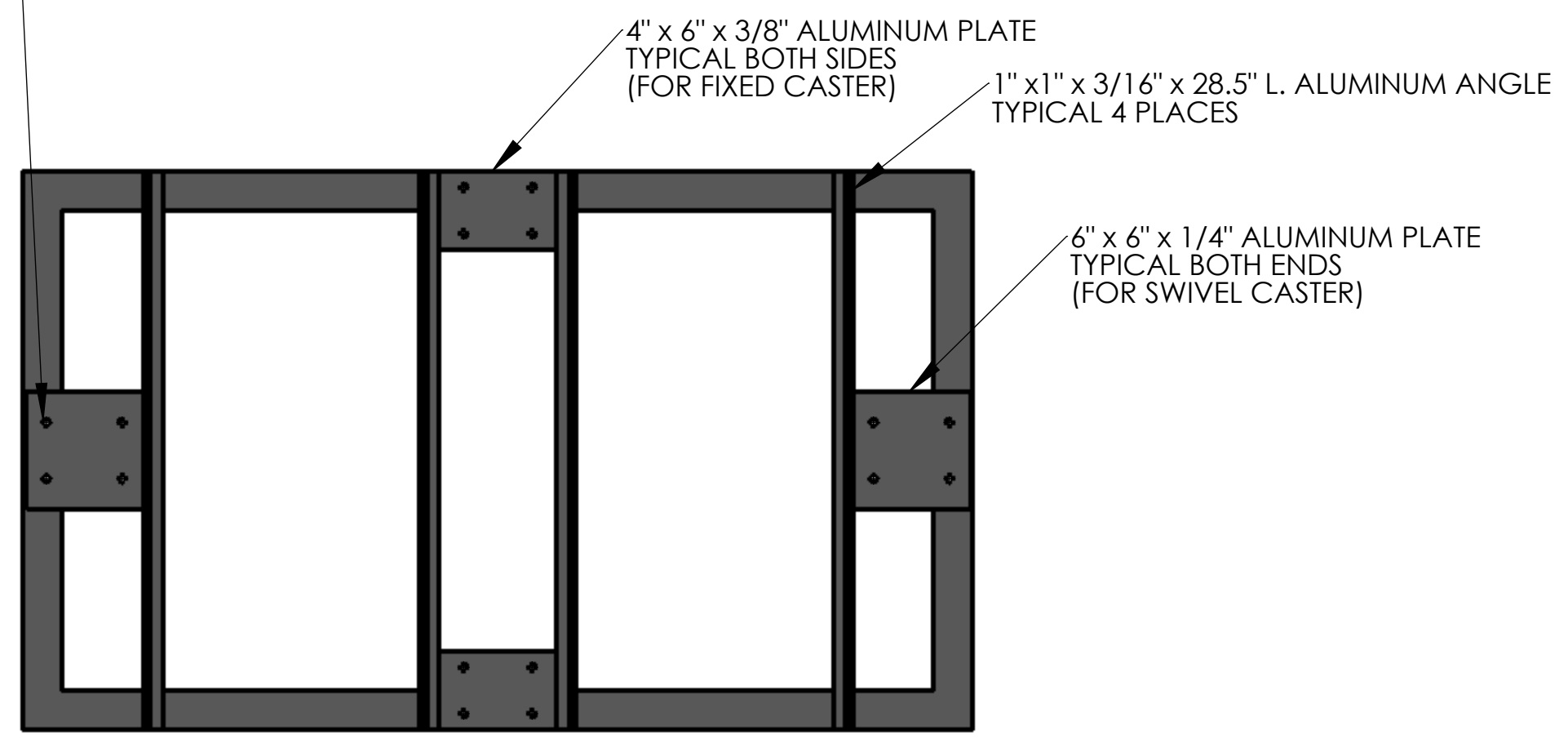


2" x 2" x 3/16" ALUMINUM ANGLE FULLY WELDED AT CORNERS.

COUNTERSINK ALL HOLES FOR CASTERS TOP SIDE ONLY



HOLE SIZE AND SPACING DEPENDANT ON CASTER USED



4" x 6" x 3/8" ALUMINUM PLATE TYPICAL BOTH SIDES (FOR FIXED CASTER)

1" x 1" x 3/16" x 28.5" L. ALUMINUM ANGLE TYPICAL 4 PLACES

6" x 6" x 1/4" ALUMINUM PLATE TYPICAL BOTH ENDS (FOR SWIVEL CASTER)

NOTES:

- 1) USE FLAT HEAD, COUNTERSUNK TYPE SCREWS FOR ATTACHING CASTERS.
- 2) FULLY WELD ALL MATING EDGES.
- 3) USE 2 FIXED CASTERS ON THE SIDES AND 2 SWIVEL CASTERS ON THE ENDS. 4" CASTERS RECOMMENDED.

PROPRIETARY AND CONFIDENTIAL
 THE INFORMATION CONTAINED IN THIS DRAWING IS THE SOLE PROPERTY OF <INSERT COMPANY NAME HERE>. ANY REPRODUCTION IN PART OR AS A WHOLE WITHOUT THE WRITTEN PERMISSION OF <INSERT COMPANY NAME HERE> IS PROHIBITED.

| | | | | | | | |
|-----------|---------|--------------------------------------|--|---------------------------------|------|-----------------|------------------|
| | | UNLESS OTHERWISE SPECIFIED: | | NAME | DATE | ROTONICS | |
| | | DIMENSIONS ARE IN INCHES | | DRAWN | JEM | | |
| | | TOLERANCES: | | CHECKED | | | TITLE: |
| | | FRACTIONAL ± | | ENG APPR. | | | RT-5333 FRAME |
| | | ANGULAR: MATCH ± | | MFG APPR. | | | SIZE DWG. NO. |
| | | BEND ± | | Q.A. | | | C 07-1004 |
| | | TWO PLACE DECIMAL ± | | COMMENTS: | | | |
| | | THREE PLACE DECIMAL ± | | | | | |
| | | INTERPRET GEOMETRIC TOLERANCING PER: | | | | | |
| | | MATERIAL | | | | | |
| | | FINISH | | | | | |
| NEXT ASSY | USED ON | APPLICATION | | SCALE: 1:8 WEIGHT: SHEET 1 OF 1 | | | |
| | | DO NOT SCALE DRAWING | | | | | |